

# ACCURATE BUILDING OFFICE/RETAIL SPACE

1150 E. Atlantic Boulevard  
 Pompano Beach, FL 33060

## FOR LEASE



For more information  
 please contact:

**Steven A. Leeds**

[steve@greencapitalrealty.com](mailto:steve@greencapitalrealty.com)

**Green Capital Realty  
 Advisors, LLC**

Licensed Real Estate Broker  
 Certified Building Contractor

7900 Glades Road  
 Suite 220  
 Boca Raton, FL 33434

T: 561.998.2427  
 F: 561.477.2776

[www.greencapitalrealty.com](http://www.greencapitalrealty.com)

### Available Space

1,000 SF

### Features

- Ample Parking
- Good Visibility
- Conveniently located off I-95
- Close to Federal Highway
- Short walk or drive to restaurants, banks, shopping, City Hall

### Traffic Count

Atlantic & Federal Hwy. (USDOT) - 41,500 cars per day

### Demographics

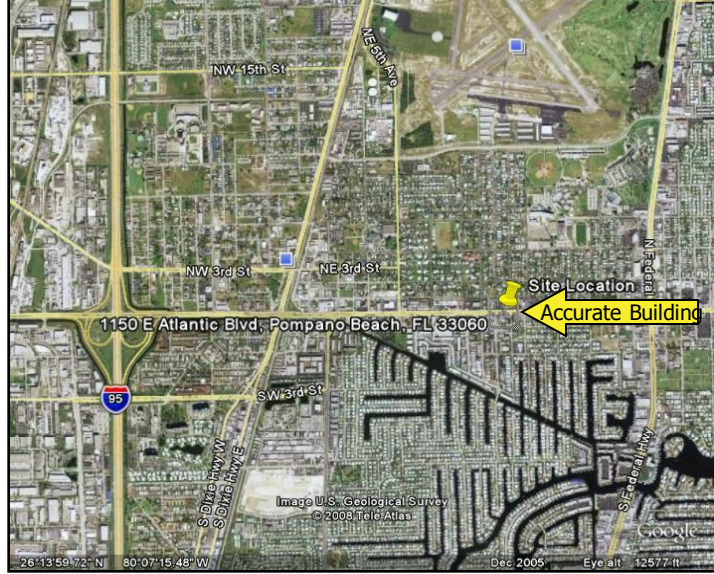
2009	1 mile	3 mile	5 mile
Population:	14,113	106,733	247,411
Average Income:	\$76,688	\$84,163	\$80,337
Median Age:	40	41	41



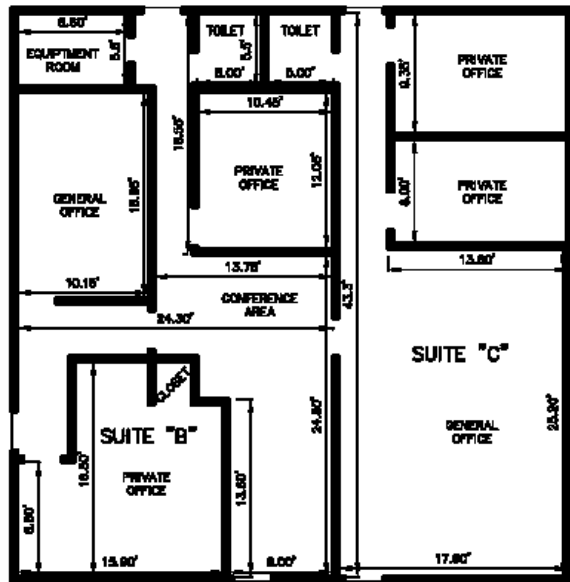
**greencAPITAL**  
Realty Advisors

Commercial Real Estate Services

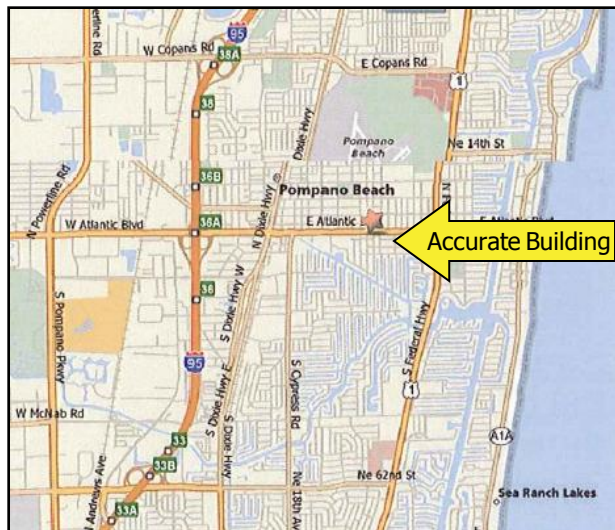
Aerial Map



Floor Plan



Map



[www.greencapitalrealty.com](http://www.greencapitalrealty.com)

Subject to errors, omissions, prior withdrawal, lease or sale without notice